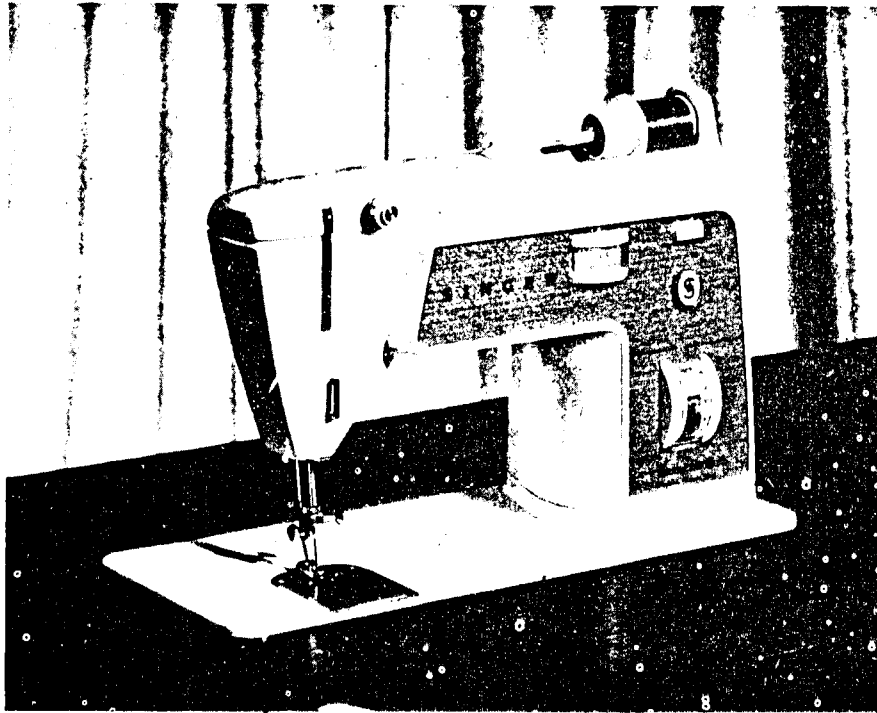


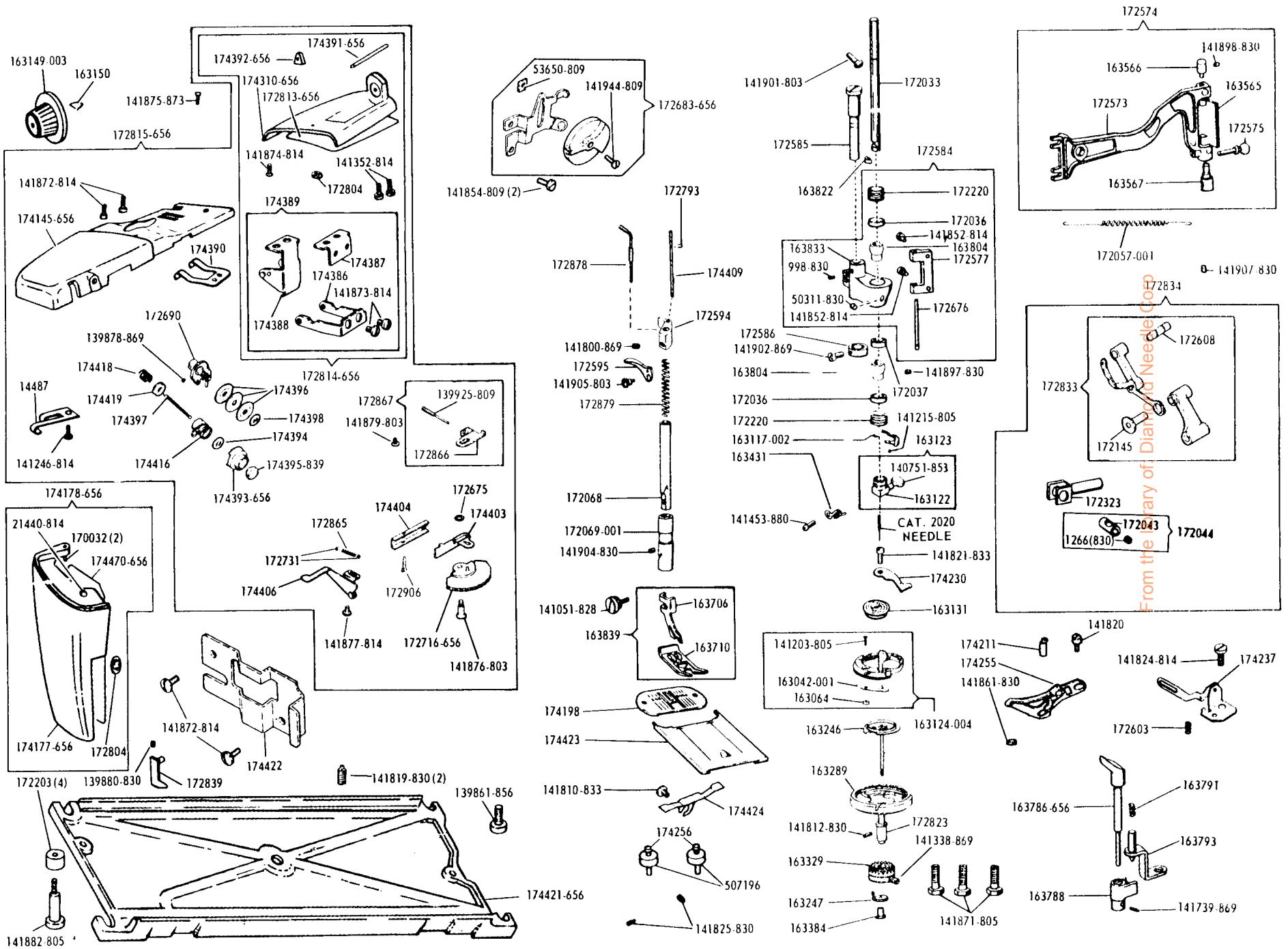
SINGER
758E3/758E6/758E7

List of Parts—Machines Nos. 758E3, 758E6 and 758E7

ATTACHMENT SET 171243

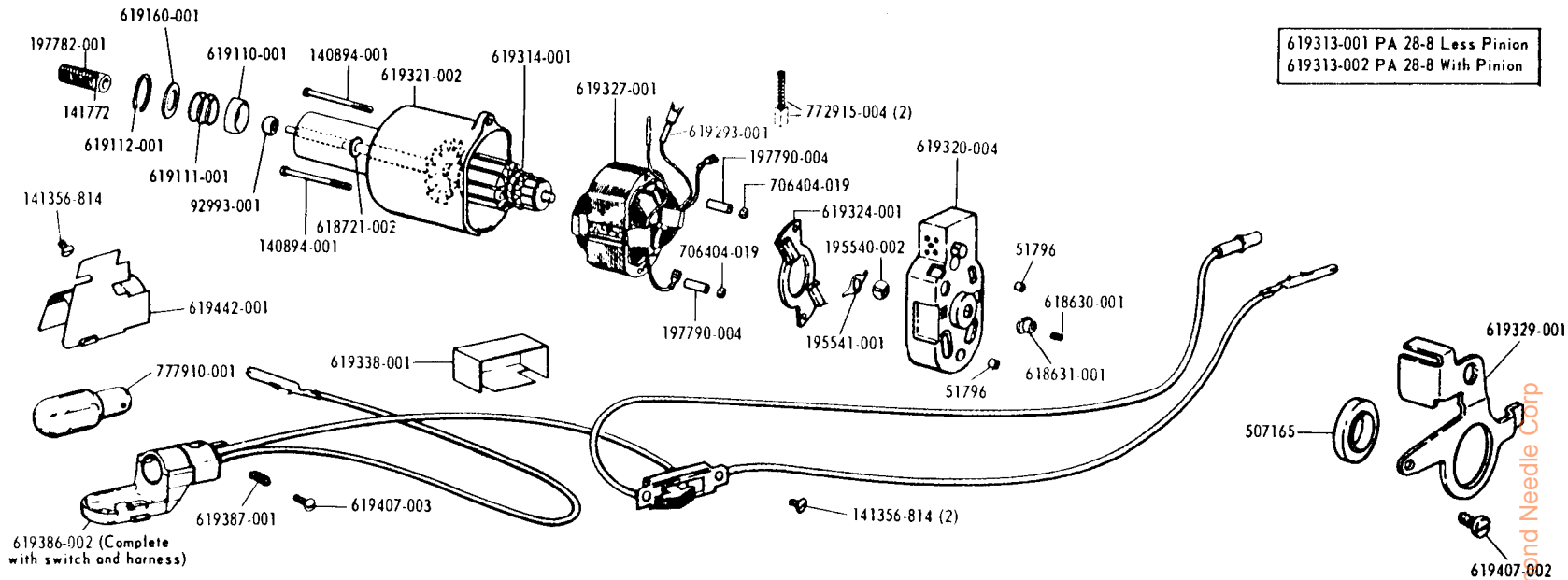
21906	Chainstitch Attachment Loop Retainer Disc
102884	Container (plastic) with Twin Needle Catalog 2028, Size 14 and two Needles Catalog 2045, Size 14
161133	Tube of Oil
161166	Presser Foot, for cording and slide fastener work
161168	Presser Foot, for button sewing
161172	Seam and Blindstitch Hem Guide complete
161917	Presser Foot Plate (snap-on), for sewing buttonholes
161919	Presser Foot Plate (snap-on), for straight sewing
163131	Bobbin (3)
163455	Chainstitch Attachment Thread Guide
163483	Special Purpose Presser Foot
171137	Throat Plate, for straight sewing
171138	Feed Cover Plate, for darning and embroidery
171150-656	Spool Pin, for two-needle stitching
171235	Attachment Box complete
171238	Chainstitch Attachment Throat Plate
171317	Disc No. 1, for Arrowhead Stitch
171319	Disc No. 3, for Diamond Stitch
171322	Disc No. 6, for Crescent Stitch
171323	Disc No. 8, for Blindstitch
171324	Disc No. 9, for Multiple Zig-Zag Stitch
171325	Disc No. 10, for Ball Stitch
171327	Disc No. 12, for Domino Stitch
171328	Disc No. 18, for Solid Pyramid Stitch
172691	Disc (double) No. 51, for Feather Stitch
172692	Disc (double) No. 52, for Duck Stitch
172694	Disc (double) No. 54, for Turkish Hem Stitch
172696	Disc (double) No. 56, for Star Stitch
172698	Disc (double) No. 57, for Sunburst Stitch
172837	Disc (double) No. 59, for Overedge Stretch Stitch
-----	Needle Catalog 2020, Size 14 (3)

List of Parts—Machines Nos. 758E3, 758E6 and 758E7

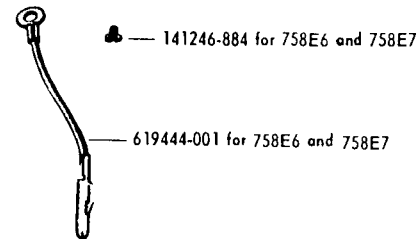
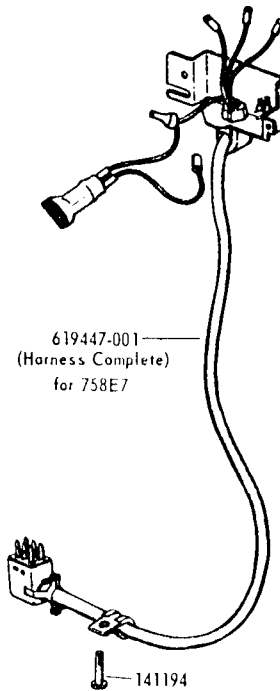
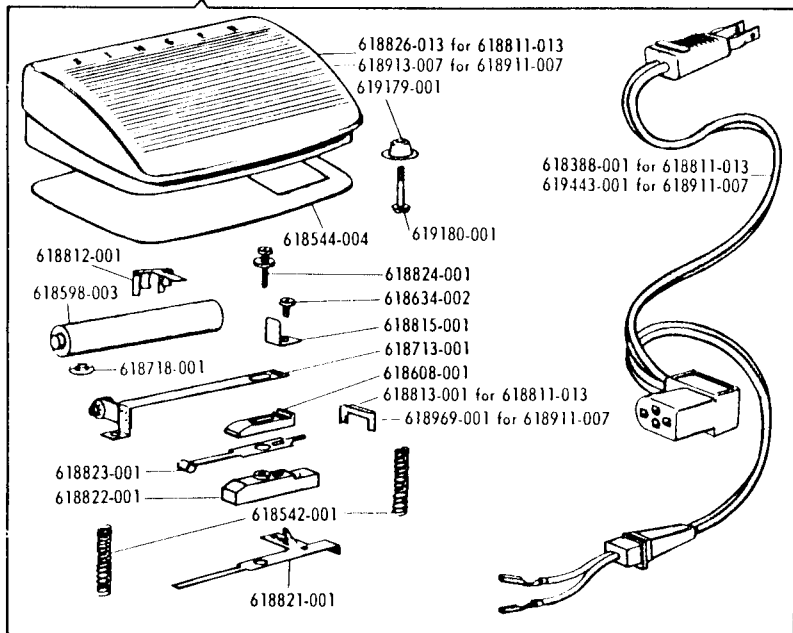


From the Library of Diana Needle Co.

Electrical Parts—Machines Nos. 758E3, 758E6 and 758E7



618811-013 for 758E3
618911-007 for 758E6



From the library of: Diamond Needle Corp

